

# St Martin's Newsletter



SUMMER TERM - Friday 3<sup>rd</sup> May

## Attendance

Whole school attendance is **slowly climbing** and this week is 92%.



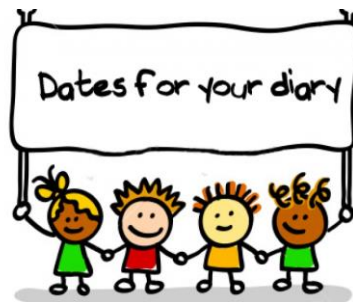
## Bank Holiday

Do not forget that **Monday** is a **Bank Holiday** and school will be closed. We return on Tuesday at our normal time. Enjoy your long weekend and hopefully the sun will join us.



## Key Dates May

6<sup>th</sup> May – Bank Holiday  
 8<sup>th</sup> May – Year3 & Year4 Mass at 10am  
 13<sup>th</sup> May – KS2 SAT's Week  
 13<sup>th</sup> May – Year5 Bikeability  
 21<sup>st</sup> May – Good citizen talk with PCSO for year 5 & year 6  
 21<sup>st</sup> May – KS1 Music festival  
 22<sup>nd</sup> May – Whole school Mass to celebrate Pentecost at 10am  
 25<sup>th</sup> May – 9<sup>th</sup> June Half term



## Attendance

Year R – 93% 4 Lates  
 Year 1 – 92% 8 Lates  
 Year 2 – 91%

Year 3 – 90% 5 Lates  
 Year 4 – 91% 9 Lates  
 Year 5 – 95%

Year 6 – 91% 8 Lates  
 5 Classes with less than 10 lates  
**\*Well done to year 3, this weeks Dojo Champs\***

Anyone who comes into school after 8:50am is marked as late. Please try to be an attendance



## Warm Weather

As the weather has begun to improve please remember to send in water bottles to school and apply suncream in the morning.



## Widnes Vikings

We have been donated some tickets from Widnes Vikings which we can use as rewards for the children. These tickets are for each home game ☺.

## St Martin's Stars

Well done to everyone who got a certificate this week.

Purple Tie certificates are given for children who embody our rules of being Kind Respectful and Responsible.

Pre-School – Bobby & Lola

Year R – Kohnan B

Theo F

Year 1 – Olivia T & Ruby-Rae C

Leo J

Year 2 – Demi-Rose W & Louis T

Vanessa K

Year 3 – Mila W & Sapphire R

Charlie S

Year 4 – Frankie C & Eli W

Eliza B

Year 5 – Ella R & Laura R

Ethan G

Year 6 – Elliott C & Cassius P

Ben A

## Assembly

Next week the assembly will be led by Year 3. Parents and carers are invited to join us.



## Parent Guides

This week's guide contains what parents need to know about [the OfCOM Media report](#). Click the link or see the attached guide for more information.

## Wednesday Word

The Wednesday Word is a resource for parents to use when discussing the weekly Gospel's with their children.

<https://www.paperturn-view.com/uk/wednesday-word/love?pid=MTA101634&p=2&v=127.9>



# What Parents & Educators Can Learn from the OFCOM MEDIA REPORT 2024

Each year, Ofcom - the UK's regulatory body for communications - produces an overview of children and parents' media experiences over the course of the previous year. At the time of writing, the latest of these reports, 'Children and parents: media use and attitudes 2024' has just been published, and we've plucked out some of its most thought-provoking findings regarding online safety.

## ONLINE LIVES



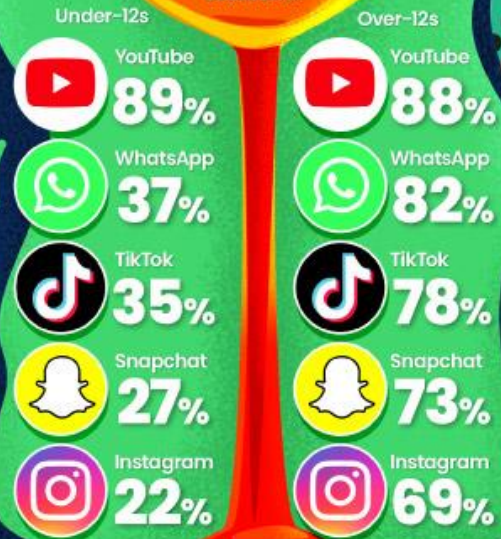
## SCREEN TIME

By children's age group, the percentage of parents who felt less able to manage their child's screentime were ...



## POPULAR PLATFORMS

Most used by children ...



## ONLINE GAMING

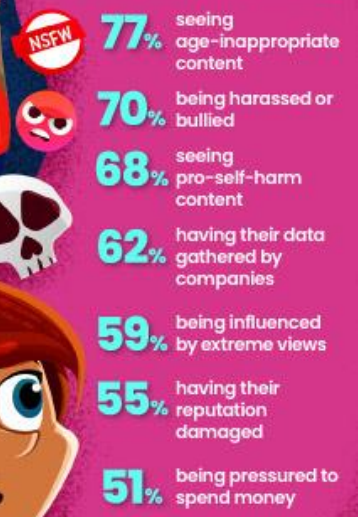
**68%** of children played video games online

Who did these children most commonly play with?



## PARENTAL CONCERNS

The things that most commonly worry parents and carers about their child being online include ...



## ONLINE SAFETY IN SCHOOLS

**93%** 8-17s had at least one lesson about online safety

**93%** of children are aware of at least one thing they can do to stay safe online

**91%** children found these lessons useful

**78%** of 8-17s were aware of age restrictions for apps

**40%** admitted to faking their age to bypass these limits

## DEVICES MOST USED TO GO ONLINE



#WakeUpWednesday

The National College

Source: See full reference list on guide page at: [nationalcollege.com/guides/media-use-and-attitudes-report-2024](http://nationalcollege.com/guides/media-use-and-attitudes-report-2024)

X @wake\_up\_weds

f /www.thenationalcollege

IG @wake.up.wednesday

YT @wake.up.weds

Users of this guide do so at their own discretion. No liability is entered into. Current as of the date of release: 01.05.2024